



# The Wattle

**The Wattle** offers a refined, modern retreat for rural WA living. This three-bedroom, two-bathroom home is perfect for downsizers, young families, or a serene holiday escape. Pitched ceilings, an open-plan layout, and an island kitchen create a spacious, light-filled atmosphere. Enjoy separate living zones and a master suite that opens onto an optional alfresco, extending your living space outdoors. The main bathroom offers the choice of a relaxing bath or a spacious, luxurious shower. An alternate elevation is available for narrower blocks, ensuring adaptability to diverse landscapes. In a nutshell, the Wattle blends contemporary design with tranquil living.



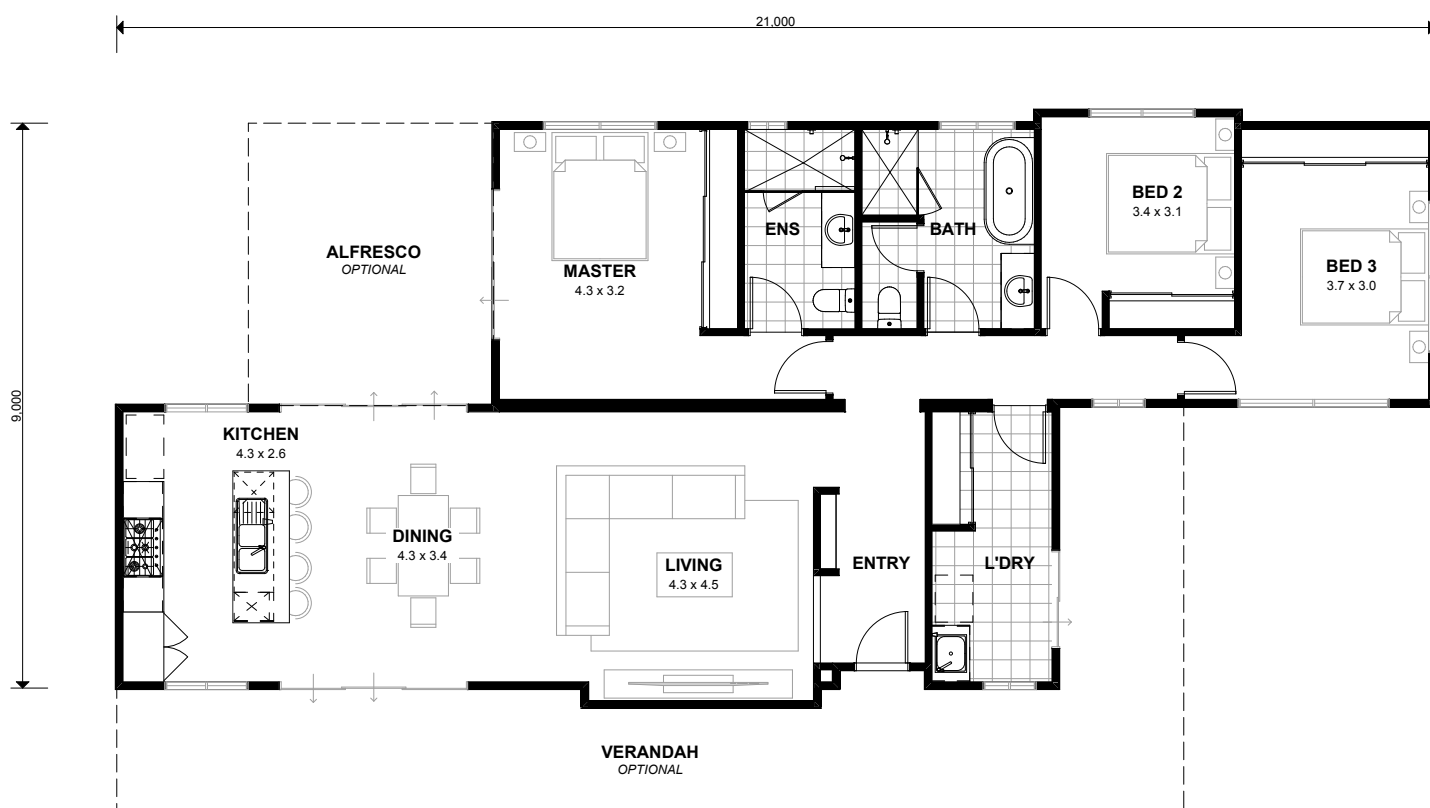


# The Wattle

x3 x2

Total 136.37sqm

**Overall House Dimensions**  
9m wide by 21m long



WA'S **TRUE**  
COUNTRY  
BUILDER

**TRUE**  
SERVICE

Our team offers dedicated support throughout the building process to make your life easier.

**TRUE**  
QUALITY

We provide an industry-best 10-year structural guarantee – a sure sign that your home will stand the test of time.

**TRUE**  
EXPERTISE

Whether you live in a cyclonic region or you have a heavy clay site, you can feel safe in knowing your home has been built for your area.

**TRUE**  
VALUE

We're transparent about what's included in the price and include required costs upfront to avoid unexpected surprises when you're underway.

**Head office** 105 Kelvin Road, Maddington, WA 6109  
**P** 9493 2998 **E** [info@trhomes.com.au](mailto:info@trhomes.com.au)  
**W** [trhomes.com.au](http://trhomes.com.au)

**MURRAY  
RIVER NORTH  
GROUP**

**TR Homes** - Proudly part of the  
Murray River North Group

Illustrations and photographs in this brochure may depict fixtures, finishes and features not supplied by the builder. All furniture, furnishings and landscaping are not included. For detailed home pricing, please contact our new home consultants. Brands and model numbers are subject to change due to supplier availability and stock. In the event of a change, an equivalent model will be given. Murray River North Pty Ltd Builders Registration Number 8476 trading as TR Homes.