



The Evolution

The Evolution's modern elevation and trademark roofline create striking kerb appeal. This stylish home boasts two to three bedrooms, with a versatile separate lounge that easily functions as a comfortable third bedroom or dedicated cinema room. Two compact yet well-appointed bathrooms offer both flexibility and practicality. However, the emphasis lies in its living space. The integrated open-plan kitchen, living, and dining area wraps around the optional alfresco, effortlessly combining indoor-outdoor living and allowing plenty of natural light to fill the space.



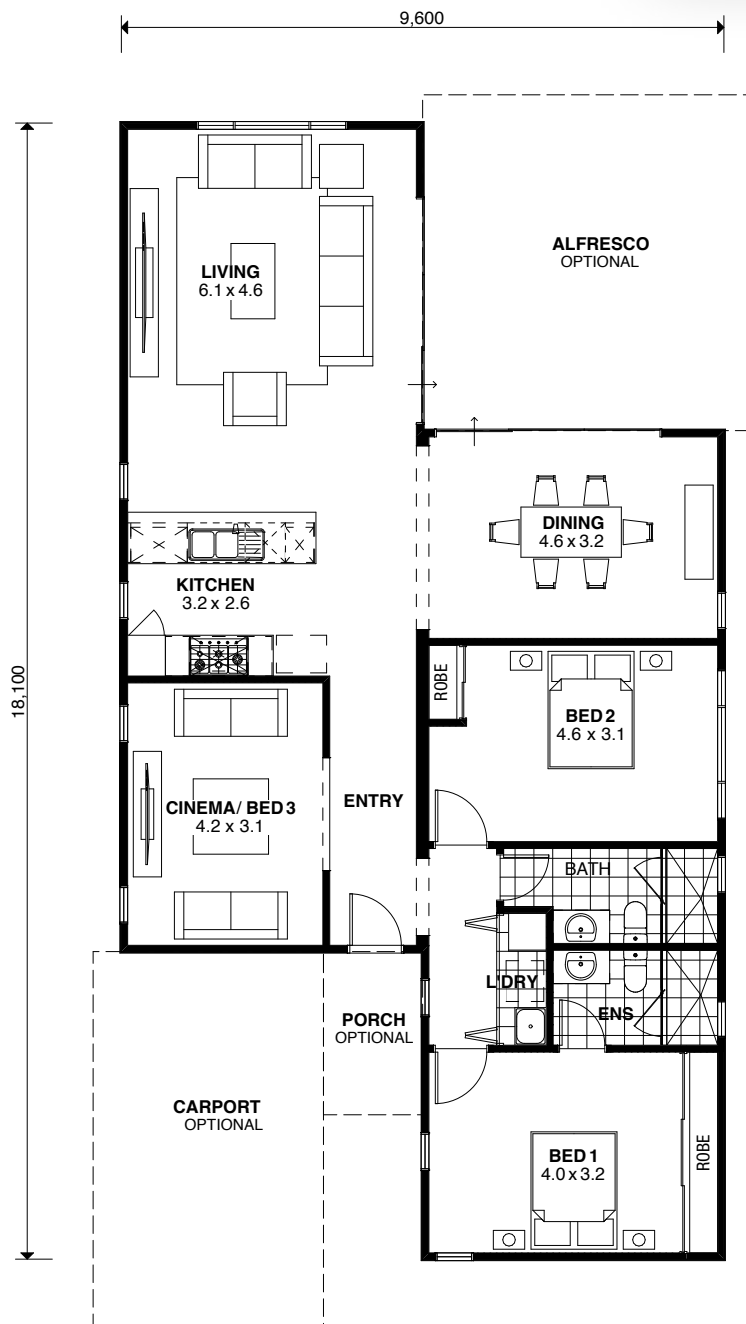


The Evolution

x2
 x2
 x1

Total 127sqm

Overall House Dimensions
 9.6m wide by 18.1m long



WA'S TRUE COUNTRY BUILDER

TRUE SERVICE

Our team offers dedicated support throughout the building process to make your life easier.

TRUE QUALITY

We provide an industry-best 10-year structural guarantee – a sure sign that your home will stand the test of time.

TRUE EXPERTISE

Whether you live in a cyclonic region or you have a heavy clay site, you can feel safe in knowing your home has been built for your area.

TRUE VALUE

We're transparent about what's included in the price and include required costs upfront to avoid unexpected surprises when you're underway.

Head office 105 Kelvin Road, Maddington, WA 6109
P 9493 2998 **E** info@trhomes.com.au
W trhomes.com.au

MURRAY RIVER NORTH GROUP

TR Homes - Proudly part of the Murray River North Group

Illustrations and photographs in this brochure may depict fixtures, finishes and features not supplied by the builder. All furniture, furnishings and landscaping are not included. For detailed home pricing, please contact our new home consultants. Brands and model numbers are subject to change due to supplier availability and stock. In the event of a change, an equivalent model will be given. Murray River North Pty Ltd Builders Registration Number 8476 trading as TR Homes.