



The Killara

The Killara is an attractive three-bedroom home, perfect for families and entertaining. This highly functional home offers a sense of space and light from the practical kitchen, which seamlessly integrates with the dining and family lounge, to the separate living area and optional alfresco. And yet, with the spacious master suite at the front of the home and the children's or visitors' wing to the rear, the Killara also provides privacy.





The Killara



x3

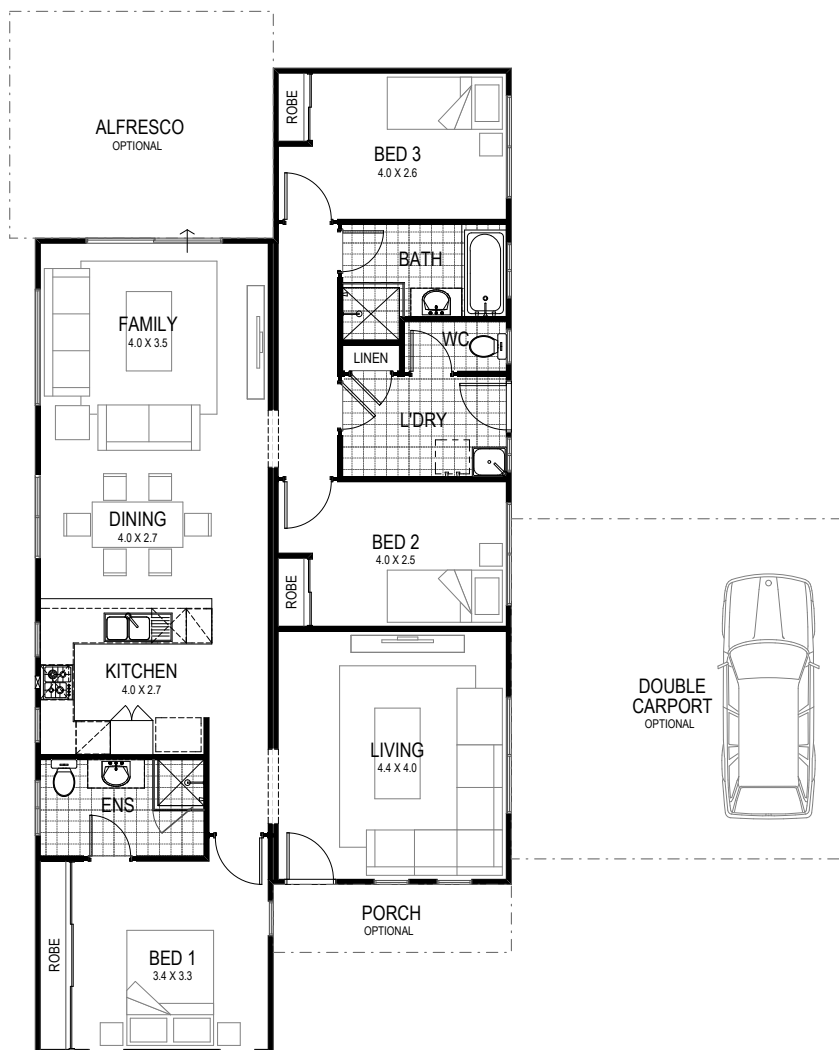


x2



Total 121sqm

Overall House Dimensions
8.4m wide x 17.4m long



WA'S **TRUE**
COUNTRY
BUILDER

TRUE
SERVICE

Our team offers dedicated support throughout the building process to make your life easier.

TRUE
QUALITY

We provide an industry-best 10-year structural guarantee – a sure sign that your home will stand the test of time.

TRUE
EXPERTISE

Whether you live in a cyclonic region or you have a heavy clay site, you can feel safe in knowing your home has been built for your area.

TRUE
VALUE

We're transparent about what's included in the price and include required costs upfront to avoid unexpected surprises when you're underway

Head office 105 Kelvin Road, Maddington, WA 6109
P 9493 2998 **E** info@trhomes.com.au
W trhomes.com.au

**MURRAY
RIVER NORTH
GROUP**

TR Homes - Proudly part of the
Murray River North Group

Illustrations and photographs in this brochure may depict fixtures, finishes and features not supplied by the builder. All furniture, furnishings and landscaping are not included. For detailed home pricing, please contact our new home consultants. Brands and model numbers are subject to change due to supplier availability and stock. In the event of a change, an equivalent model will be given. Murray River North Pty Ltd Builders Registration Number 8476 trading as TR Homes.