



The coral bay

The Coral Bay is an ideal two-bedroom home boasting an inviting and distinctive exterior. The kitchen, dining and living area cleverly utilise the space and the celestial windows make this main living area feel much larger than you would expect from the actual square meterage. Beyond the carefully designed bathroom and the laundry, with its own direct access to outside, lay the equally practical bedrooms, complete with built-in robes.



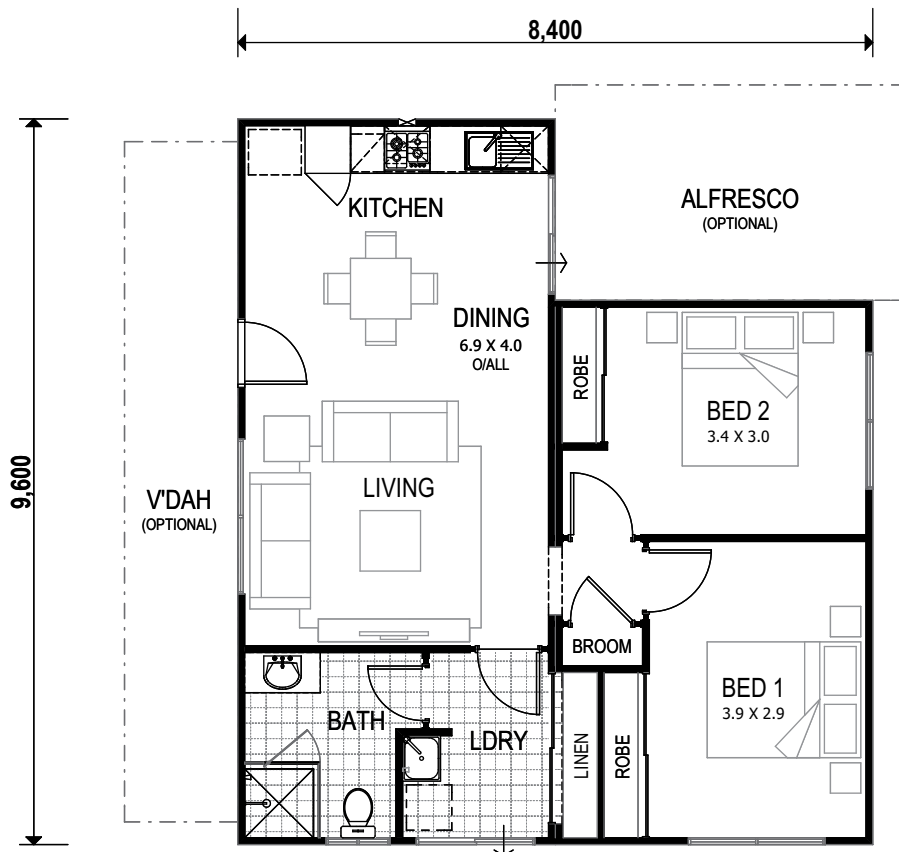


The coral bay

x2 x1

Total 70sqm

Overall House Dimensions
8.4m wide x 9.6m long



THE TRUE DIFFERENCE

TRUE SERVICE

Our team offers dedicated support throughout the building process to make your life easier.

TRUE QUALITY

We provide an industry-best 10 year structural guarantee – a sure sign that your home will stand the test of time.

TRUE EXPERTISE

Whether you live in a cyclonic region or you have a heavy clay site, you can feel safe in knowing your home has been built for your area.

TRUE VALUE

We're transparent about what's included in the price and include required costs upfront to avoid unexpected surprises when you're underway

head office 105 Kelvin Road, Maddington, WA 6109 Phone (08) 9493 2998 Email info@trhomes.com.au

trhomes.com.au



TR Homes - Proudly part of the Murray River North Group

Illustrations and photographs in this brochure may depict fixtures, finishes and features not supplied by the builder. All furniture, furnishings and landscaping are not included. For detailed home pricing please talk to our Sales consultants. Brands and Model numbers are subject to change due to supplier availability & stocks. In the event of a change, an equivalent model will be given. Murray River North Pty Ltd Builders Registration Number 8476 trading as T&R Homes