



# The pilbara

**The Pilbara** is a spacious free-flowing, four-bedroom home that has everything a growing family could wish for. There's the private parent's retreat, complete with ensuite and walk-in robe, cleverly tucked away from the separate children's wing. There's the main open-plan kitchen, living and dining area, opening onto the optional alfresco to form an inviting family or entertainment hub. There's even a study, along with a theatre/games room and handy store room. Space, privacy and functionality – The Pilbara has it all.



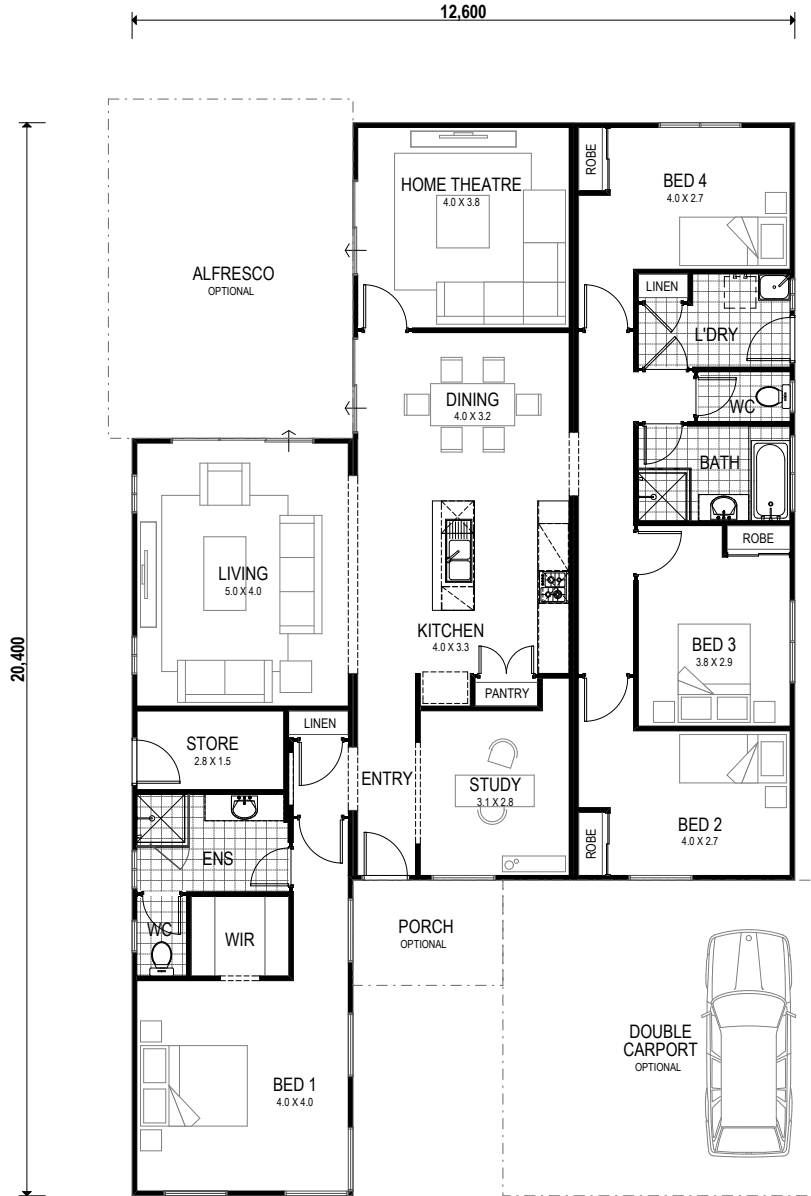


# the pilbara

x4 x2 x1

Total 181sqm

**Overall House Dimensions**  
12.6m wide by 20.4m long



## THE TRUE DIFFERENCE

### TRUE SERVICE

Our team offers dedicated support throughout the building process to make your life easier.

### TRUE QUALITY

We provide an industry-best 10 year structural guarantee – a sure sign that your home will stand the test of time.

### TRUE EXPERTISE

Whether you live in a cyclonic region or you have a heavy clay site, you can feel safe in knowing your home has been built for your area.

### TRUE VALUE

We're transparent about what's included in the price and include required costs upfront to avoid unexpected surprises when you're underway

head office 105 Kelvin Road, Maddington, WA 6109 Phone (08) 9493 2998 Email [info@trhomes.com.au](mailto:info@trhomes.com.au)

[trhomes.com.au](http://trhomes.com.au)



TR Homes - Proudly part of the Murray River North Group

Illustrations and photographs in this brochure may depict fixtures, finishes and features not supplied by the builder. All furniture, furnishings and landscaping are not included. For detailed home pricing please talk to our Sales consultants. Brands and Model numbers are subject to change due to supplier availability & stocks. In the event of a change, an equivalent model will be given. Murray River North Pty Ltd Builders Registration Number 8476 trading as T&R Homes.