



# The grove

**The Grove** is a thoughtfully designed smaller home, with multiple elevations available to make The Grove your home. It's an entertainer's delight, providing both a stunning open-plan living area, as well as a private retreat for when it's time to retire for the night. The front of the home showcases the gourmet kitchen, integrated into the dining area that opens onto the optional alfresco, providing plenty of living and entertaining space, as well as cool shade in the summer.



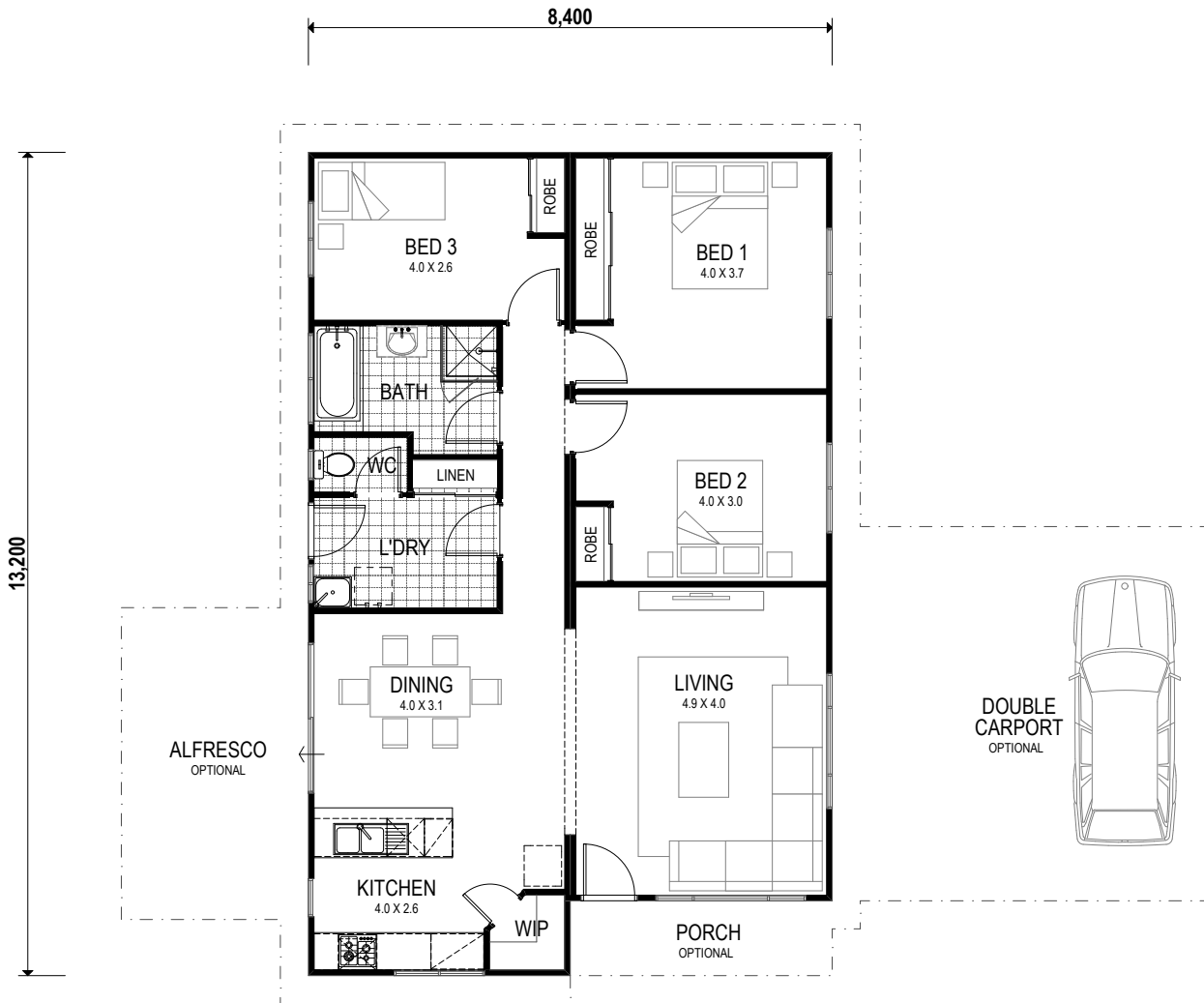


the grove

x3 x1 x1

Total 106sqm

Overall House Dimensions  
8.4m wide by 13.2m long



## THE TRUE DIFFERENCE

### TRUE SERVICE

Our team offers dedicated support throughout the building process to make your life easier.

### TRUE QUALITY

We provide an industry-best 10 year structural guarantee – a sure sign that your home will stand the test of time.

### TRUE EXPERTISE

Whether you live in a cyclonic region or you have a heavy clay site, you can feel safe in knowing your home has been built for your area.

### TRUE VALUE

We're transparent about what's included in the price and include required costs upfront to avoid unexpected surprises when you're underway

head office 105 Kelvin Road, Maddington, WA 6109 Phone (08) 9493 2998 Email [info@trhomes.com.au](mailto:info@trhomes.com.au)

[trhomes.com.au](http://trhomes.com.au)



TR Homes - Proudly part of the Murray River North Group

Illustrations and photographs in this brochure may depict fixtures, finishes and features not supplied by the builder. All furniture, furnishings and landscaping are not included. For detailed home pricing please talk to our Sales consultants. Brands and Model numbers are subject to change due to supplier availability & stocks. In the event of a change, an equivalent model will be given. Murray River North Pty Ltd Builders Registration Number 8476 trading as T&R Homes.