



# The evolution

**The Evolution's** modern elevation and trademark roofline create a distinctive kerb appeal. Two bedrooms and two compact, yet beautifully appointed bathrooms make this stylish home both flexible and practical, but the emphasis here is on the living space. A separate lounge complements the integrated open-plan kitchen, living and dining area, which wraps around the optional alfresco, effortlessly combining indoor-outdoor living and providing plenty of natural light.



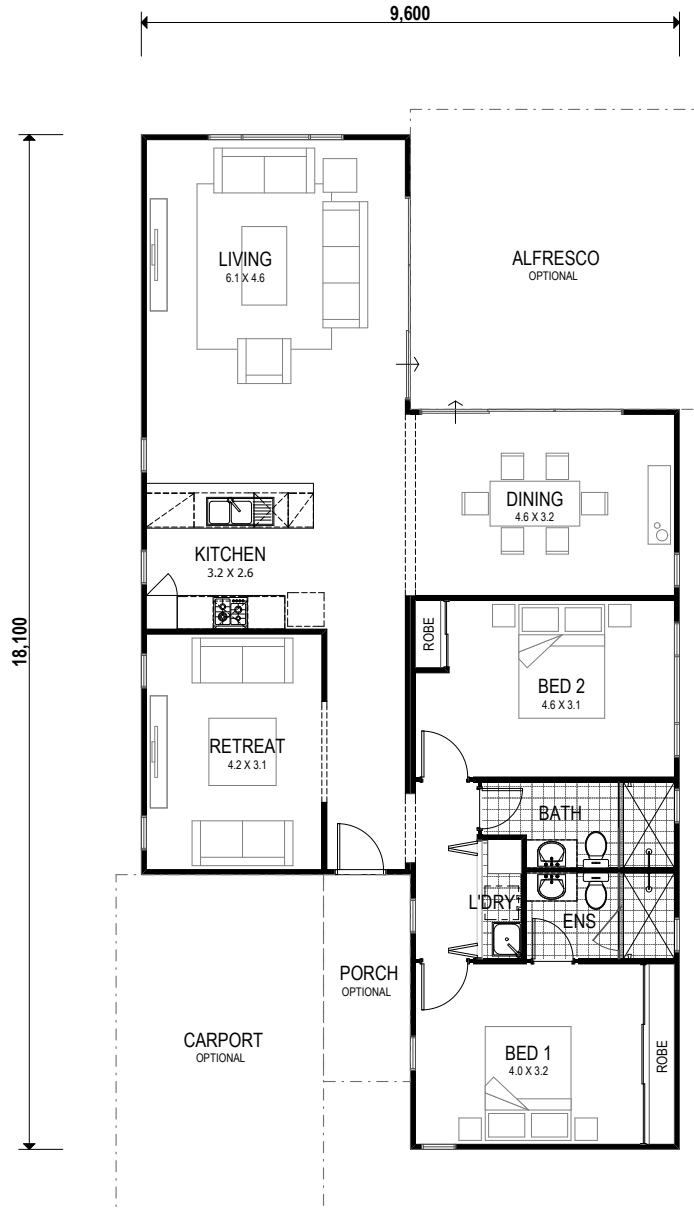


the evolution

x2 x2 x1

Total 127sqm

Overall House Dimensions  
9.6m wide by 18.1m long



## THE TRUE DIFFERENCE

### TRUE SERVICE

Our team offers dedicated support throughout the building process to make your life easier.

### TRUE QUALITY

We provide an industry-best 10 year structural guarantee – a sure sign that your home will stand the test of time.

### TRUE EXPERTISE

Whether you live in a cyclonic region or you have a heavy clay site, you can feel safe in knowing your home has been built for your area.

### TRUE VALUE

We're transparent about what's included in the price and include required costs upfront to avoid unexpected surprises when you're underway

head office 105 Kelvin Road, Maddington, WA 6109 Phone (08) 9493 2998 Email [info@trhomes.com.au](mailto:info@trhomes.com.au)

[trhomes.com.au](http://trhomes.com.au)



TR Homes - Proudly part of the Murray River North Group

Illustrations and photographs in this brochure may depict fixtures, finishes and features not supplied by the builder. All furniture, furnishings and landscaping are not included. For detailed home pricing please talk to our Sales consultants. Brands and Model numbers are subject to change due to supplier availability & stocks. In the event of a change, an equivalent model will be given. Murray River North Pty Ltd Builders Registration Number 8476 trading as T&R Homes.